

# Thin Kerf Gang Edger



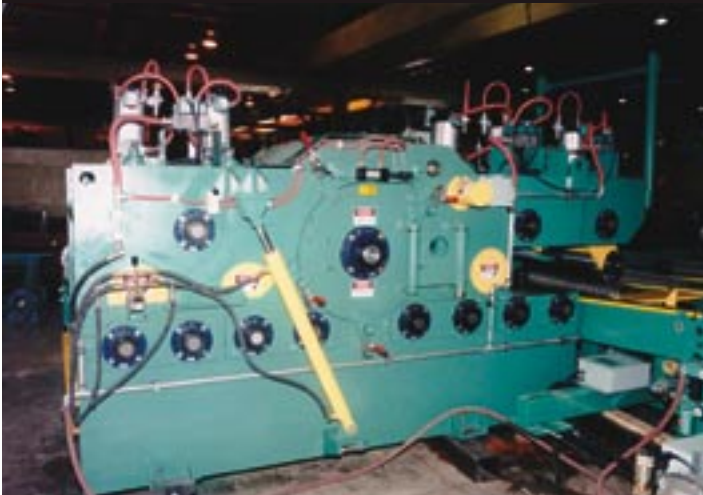
TS Manufacturing Co.

SOLUTIONS

Printed in Canada Imprimé au Canada

# Specifications

All specifications subject to change without notice



## TS Thin Kerf Gang Edgers

4" to 10"

Clam Shell Opening

All T.S. frames are line bored and stress relieved

## Arbor

Standard arbor is chromed with splined sleeve

Delta, involute and other options available

## Fully Machined Guides

Light weight aluminum with babbitt

Optional hardened steel

Heavy Frames up to 2" thick steel plate

## Sawing Style

Top or bottom arbor

Climb or counter climb cutting

Setworks

Shift individual or banks of saws

Shift with linear positioning cylinder or

air stacked modules

## Optimization Options

- Photo cell scan
- Laser scan
- Scan linear or transverse
- Laser light prepositioning

## Feed Systems

Manual or fully optimized with either feed chain or hard chromed feed roll charging systems on optimized units. They are available as pick and place or positioning pin style. An optimized system is available with grade input and operator override prepositioning, when linear position laser lights project optimized sawlines on cants and the operator has the ability to reposition the sawing solution to maximize grade or value recovery. Line bar types can be fixed or shifting.

## Outfeed System Options

- Rollcase
- Belt



**TS Manufacturing Co.**

(Div. of 381572 Ontario Limited)

2 Fleetwood Road Lindsay, ON K9V 4S5

Tel : (705) 324-3762 Fax : (705) 324-6482

[www.tsman.com](http://www.tsman.com) [sales@tsman.com](mailto:sales@tsman.com)

SOLUTIONS