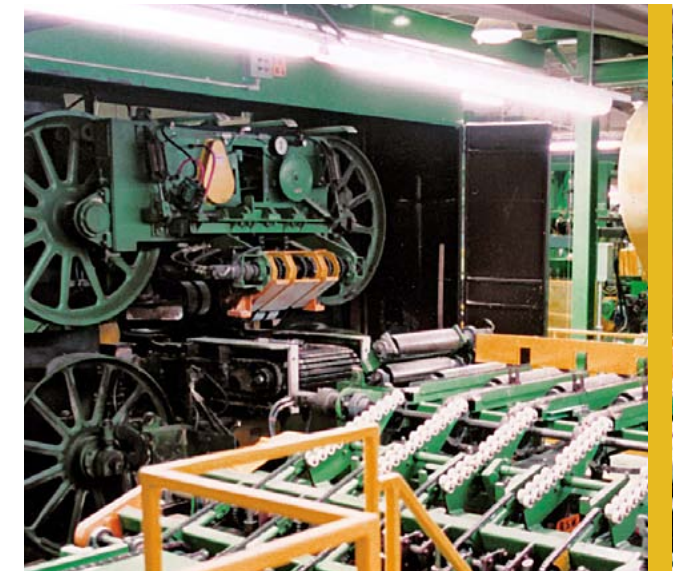




**Resaws are the efficient production center of most sawmills.** Whether you're looking for a vertical linebar, horizontal, slant, or multiple saw system, TS has the experience and capability to ensure a smooth flowing and low maintenance resaw. Matching our class leading lumber handling capability with our precision bandsaws provides us the flexibility to provide the system you require for long term productivity and efficiency. Whether it's a simple infeed or fully automatic, feeding from both sides complete with pre-grading system, TS has the combination of machinery and experience to provide you with the most efficient system possible.

Outfeeds range from the conventional jump chain and splitter outfeed, to double length, Quad Resaw Tailing Systems, with three separate discharge routings (from a single pass).



## Options

- Available in vertical, horizontal or slant configurations
- Available with TS Manufacturing Hydraulic High Strain or Air Strain Bandsaws
- Fed with simple drop feed and wishbone turners or high speed infeeds using ducking headshafts and cross over chains integrated with pop-up secondary linebars
- Stacked pneumatic, linear hydraulic, or linear electric positioning systems
- Fixed Position Press Rolls with pivoting pneumatic cylinders or high speed 'Flying Press Rolls' on linear positioning and self adjusting for cant thickness

[www.tsman.com](http://www.tsman.com)

Visit our website to find out more about TS Resaws.



**TS Manufacturing**

2 Fleetwood Rd, Lindsay, ON K9V 6H4 Canada  
Tel: +1 705 324 3762 | Fax: +1 705 324 6482